

Patient Navigation in Colorado

Presenting
Andrea (Andi) Dwyer



**Patient
Navigator
Training
Collaborative**

Supported by CDPHE: Colorado Colorectal Cancer Control
Program

Outline:

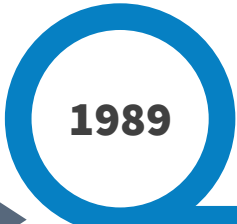
- **General Historic Perspective Colorado**
- **Sustainability Framework**
- **Statewide Alliance**
- **Sustainability Framework**
- **Health Navigation Workforce Initiative**
- **Funding/Policy Measures Nationally and Colorado**
- **Colorado Opportunities**
- **Join In the Fun!!!**

History & Evolution of Patient Navigation & CHWs

NACR and Native PN
in Early 90s!



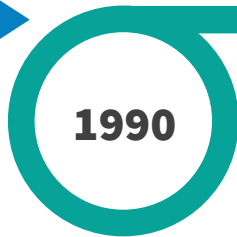
National Cancer
Act signed



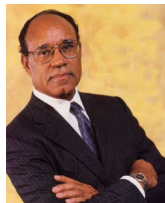
1989

Report to the
Nation on
Cancer and the
Poor

First Patient
Navigation
Program
established by
Dr. Harold
Freeman



1990



Late 1990's
Denver Health
creates CHW
certificate at
Community
College of
Denver

Patient Navigator
Outreach & Chronic
Disease Act (HR 1812)

Patient Navigation
Research Program
C-Change defines
Patient Navigation

American Cancer Society launches
Patient Navigator Program

Patient Navigator
Training
Collaborative (PNTC)
established by
Denver Health &
University of
Colorado



2006

Denver Health was 1 of 10 sites



2007

NCI Community
Cancer Centers
Program established
and includes patient
navigation

CHWs and Promotores de Salud
Widely employed by FQHCs, Migrant
health and CBOs in Colorado

Academy of Oncology Nurse & Patient Navigators (AONN+) formed

Association of Community Cancer Centers (ACCC) Cancer Program Guidelines 1: Patient Navigation Services

Colorado CHW PdS and HN Alliance Created

Center for Medicare & Medicaid Innovation (CMMI) Oncology Care Model begins and includes a patient navigation requirement

AONN+ launches Oncology Nurse (ONN-CG) and Oncology Patient Navigator (OPN-CG) Certification Exams

2009

ONS, AOSW, NASW Joint Position on the Role of Oncology Nursing & Oncology Social Work in Patient Navigation

National Patient Navigation Leadership Summit held, navigation outcomes & metrics published in *Cancer* (2011)

2010

Commission on Cancer releases *Patient Navigation Process Accreditation Standard 3.1*

2012

2013

ONS releases Oncology Nurse Navigator Core Competencies

2016

2017

AONN+ releases 35 evidence-based navigation metrics

CDPHE Health Navigator Workforce Development effort Competency assessment, registry and training sites



Community Health Worker

A lay member of the community who is trained to deliver an intervention to community members in community settings.
(CDPHE)

Promotor(a) de Salud

Lay health workers who work in Spanish-speaking communities.
(CDC)

Health Navigator

A trained member of the health care team, typically employed by health delivery systems to assist individuals in reducing barriers to care and in negotiating complex health care systems.
(CDPHE)

How Many CHW/PN/PdS in Colorado?

?

Number is Not Known
But Each Year the
PNTC Program Trains About 200 ppl per year.
Definitely a Workforce!

Sustainability Model (ASTHO)

Recommendation

Goal

Workforce Development

Support standardized training and certification of PN and Community Health Workers (CHWs)

Occupational Associations

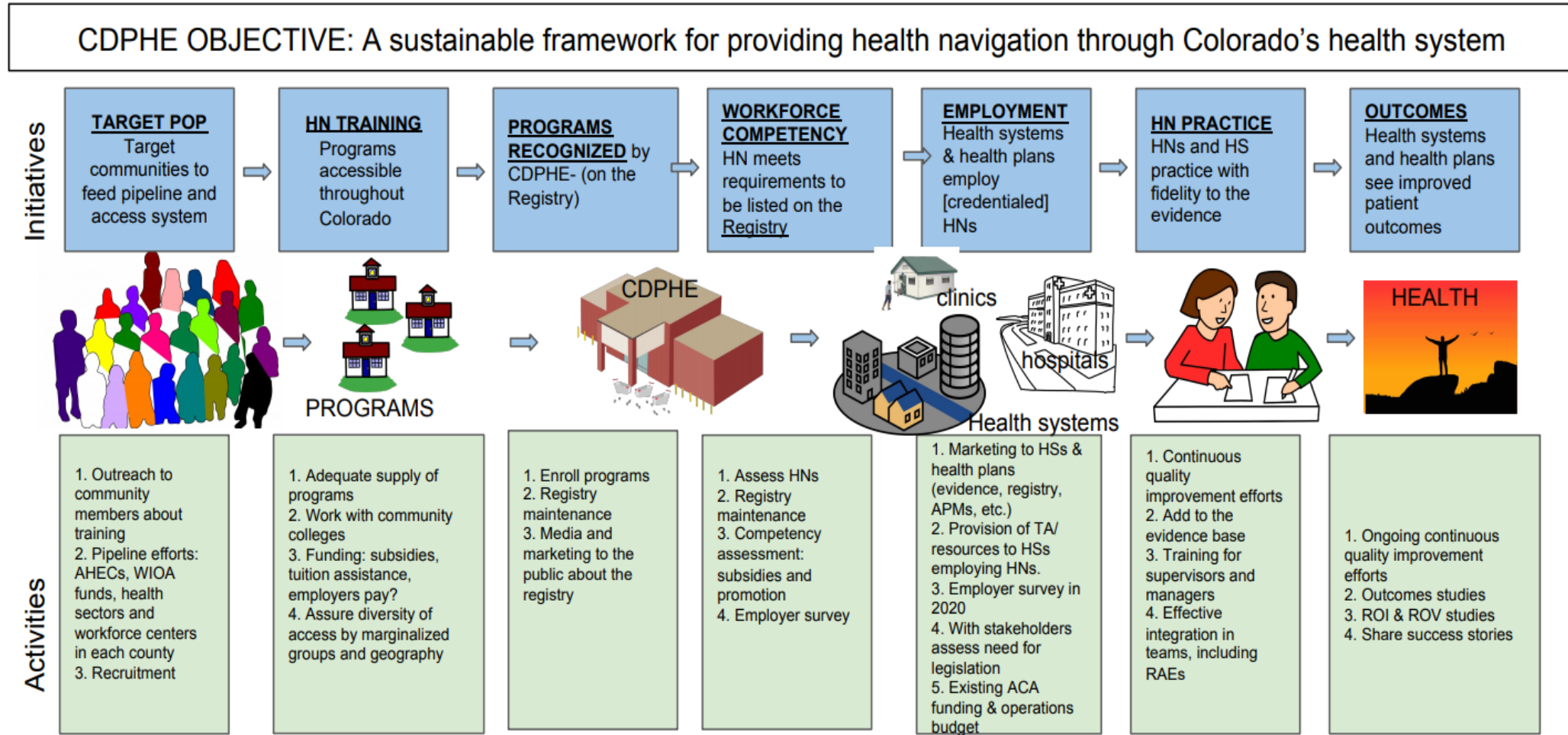
Create occupational networks to strengthen PN and CHW effectiveness in the workforce.

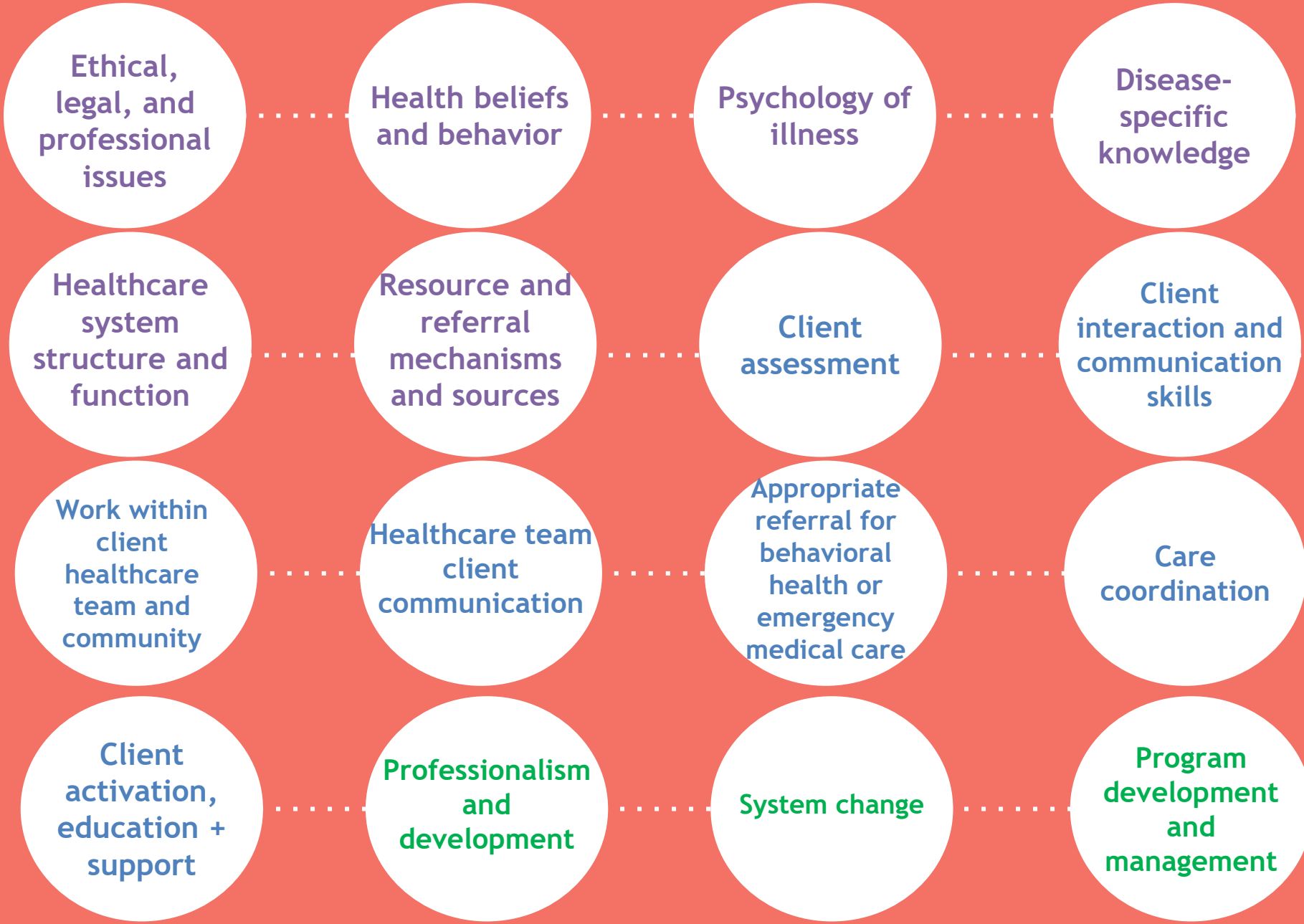
Long Term Financing

Support standard reimbursement for PN and CHW services

Workforce

Sustainability Framework- Expand beyond Health Navigators to include CHW and PdS





Missing community setting functions:
 Outreach
 Community education
 Community mobilization
 Community advocacy



**Recognized
Training
Programs
Focused on
in-system
navigation
competencies**

Patient Navigator Training
Collaborative

Otero Junior College

Boomers Leading Change

Metro State University



COLORADO
Department of Public
Health & Environment

Competency Assessment

16
Navigators per
session

8
Scenarios

Pass Rate
70%

Cost
\$363

Needs expansion beyond in system navigation to include community-based functions/competencies





COLORADO

Health Navigator Registry

Department of Public Health & Environment

[Home](#)[Health Navigators](#)[Training Programs](#)[Evaluation Sites](#)[Sign in](#)

Welcome to the Colorado Health Navigator Registry

Please choose your action from the menu bar at the top

We do not license or certify health navigators. On this site, you'll find:

- * CDPHE-recognized training programs.
- * Competency evaluation sites.
- * Navigators who have completed the requirements for this registry.

These three lists are voluntary, and we provide them as part of our public service.

Nothing on this site prohibits other health navigator training programs from operating or individuals from using the titles "health navigator" or "patient navigator."

[Intent and limits of our credentialing process and registry.](#)



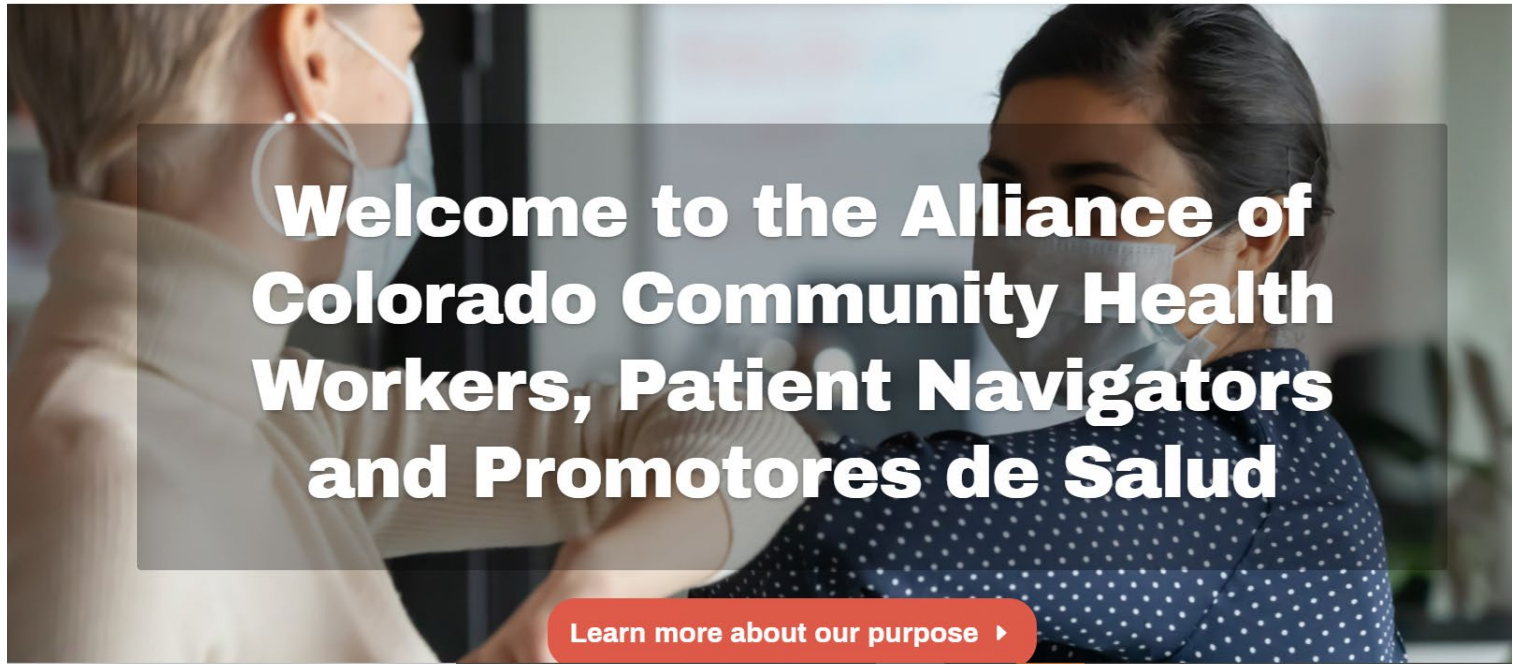

COLORADO
Department of Public
Health & Environment

Occupational Association

alliance of Colorado Commu x +

https://www.alliance-colorado.org

@alliance-colorado.org Events



Type here to search

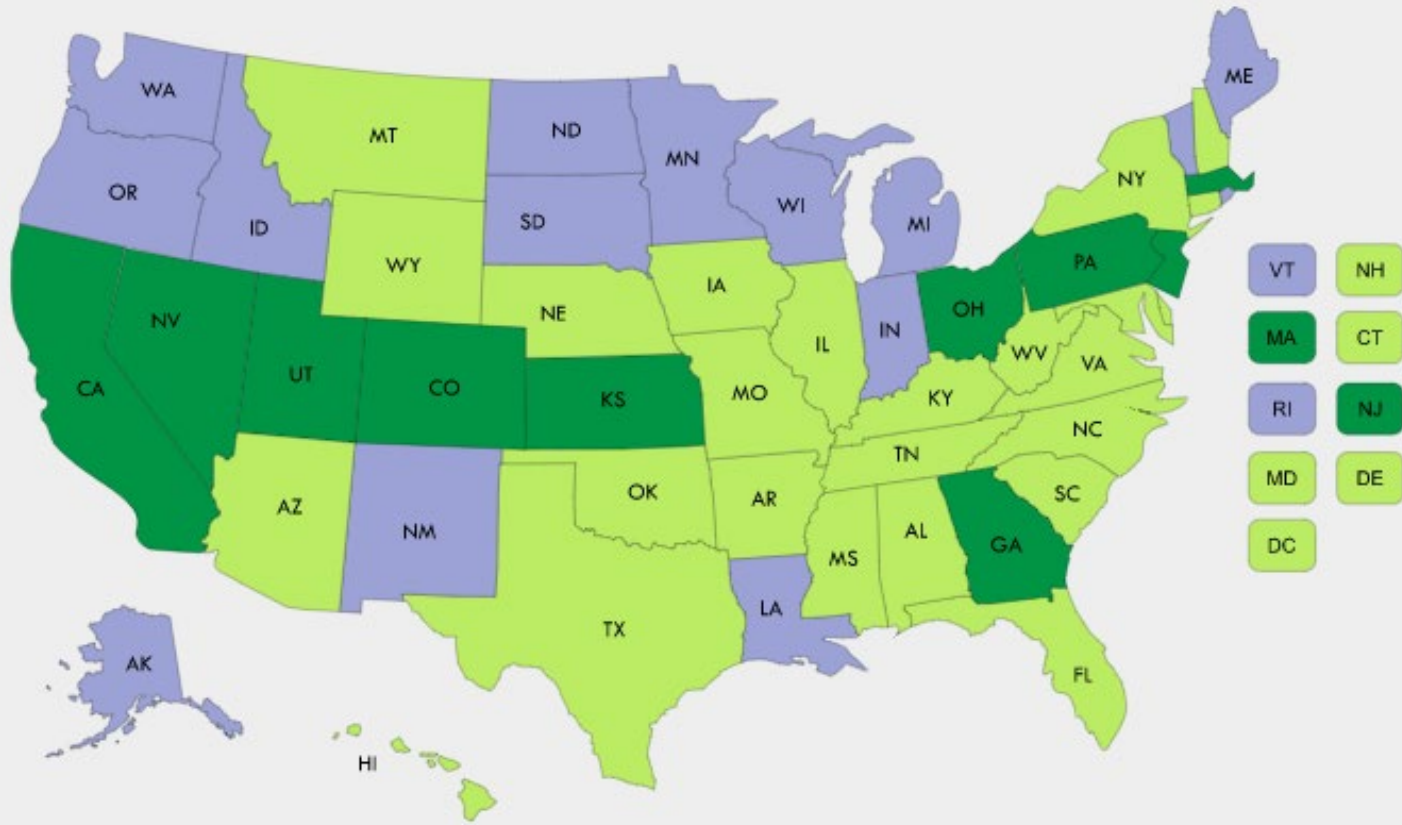
Taskbar icons: File Explorer, Mail, Calendar, Photos, Edge, Teams, PowerPoint

Key to
Sustainability

National Navigation Roundtable and National Association of Community Health Workers



Sustainable Funding



■ Reimburses for CHW services through its Medicaid program. (15 states)

■ Medicaid does not directly reimburse CHWs for service but MCOs reimburse for services or hire CHWs directly. (10 states)

■ Does not reimburse for CHW services through its Medicaid program. (27 states)

TARGETED APPROACHES

Adapting a sustainability planning process for PN

Clinical sustainability capacity: the ability of an organization to maintain structured clinical care practices over time and to evolve and adapt these practices in response to new information (Washington University in St. Louis, 2018)

CCSP Sustainability Planning Process:

1. 3-5+ individuals, the sustainability planning team, each complete the PNSAT assessment
2. CCSP compiles and sends average scores for individual and clinic team as a whole
3. Sustainability action planning with facilitation by CCSP
 - a. Discuss results
 - b. Develop goal and plan
 - c. Implement, reassess, and adjust

Focus is on engaging in the iterative *process*

Patient Navigation Sustainability Assessment Tool Domain	Definition
Engaged Staff & Leadership	Having frontline staff & management within the organization who are supportive of the practice
Organizational Context & Capacity	The practice has the internal support & resources needed to effectively screen and navigate patients/clients
Funding Stability	The practice has established a consistent financial base
Engaged Community	The practice has external support and engagement (beyond the clinical navigation team)
Communication, Planning, & Implementation	Using processes that guide the direction, goals & strategies of the practice
Workflow Integration	Designing the practice to fit into existing practices & technologies
Monitoring & Evaluation	Assessing the practice to inform planning & document results
Outcomes & Effectiveness	Understanding & measuring practice outcomes and impact of the practice

Common themes and focus areas

Clinic strengths:

- *Engaged Staff and Leadership*
- *Organizational Context and Capacity*
- *Engaged Community*

Clinic challenges/barriers:

- *Funding Stability*
- *Monitoring and Evaluation*
- *Communication, Planning, & Implementation*

PNSAT domains addressed in sustainability plans:

- *Workflow Integration (10)*
- *Communication, Planning, & Implementation (9)*
- *Funding Stability (5)*
- *Monitoring and Evaluation (4)*
- *Outcomes and Effectiveness (3)*

Resources – CCSP Sustainability Google Site



Sustainabili...
of PN

Home

- ▼ About
- ▼ PNSAT
- ▼ Action Planning
- ▼ Resources

Sustainability of Patient Navigation for Preventive Cancer Screening

A Framework to Plan for Patient Navigation Sustainability in the Primary Care, Community Health Setting

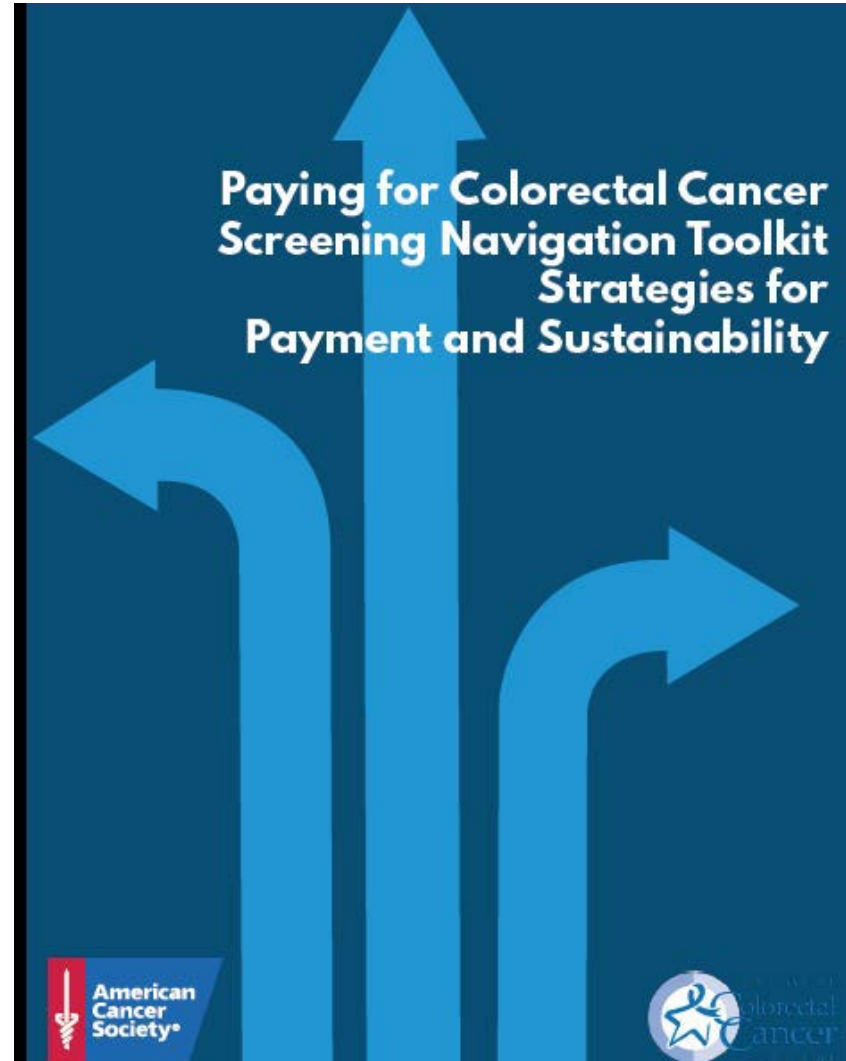
<https://sites.google.com/view/ccsp-pn-sustainability>

colorado school of
public health

UNIVERSITY OF COLORADO
COLORADO STATE UNIVERSITY
UNIVERSITY OF NORTHERN COLORADO

Resources – “Paying for PN” Toolkit

<https://bit.ly/2EDpStZ>



Advancing CHW and PN in Colorado

State Agency Outreach

Updates on State Agency Outreach

- Receptivity to explore policy mechanics and interest in considering existing vehicles
- HCPF reported on their work to advance alternative payment models and discussed avenues to include CHWs as part of this initiative
- Discussed potential opportunities for replicating the peer support model legislation

Updates on Potential Legislation this Session

At this time, there is not a planned standalone effort to introduce community health worker legislation this session. However, there are two potential pathways where there could be a leverage opportunity to integrate community health worker policy advancements.

Healthcare workforce package

There is a broad healthcare coalition currently evaluating policy and funding initiatives to advance short, medium and long-term goals that can support the healthcare workforce in Colorado. As part of this package, there may be an opportunity to invest in cross-training of healthcare staff in community health worker/patient navigator trainings to expand the field of community health workers, while simultaneously setting up a formal process through the legislature to advise and evaluate longer-term policy options in a future legislative session that enables sustainable financing and reimbursement mechanisms for community health workers who serve in community and healthcare settings.

Behavioral health aide

The Polis administration submitted recommendations to the Behavioral Health Transformational Task Force in December (see page 1 under “Workforce Investments”). One of their recommendations included support for the establishment of a behavioral health aide program. Some other states such as Alaska have similar models. Unclear if this recommendation will be considered or adopted by the legislature but we will closely monitor and consider opportunities to engage.

Next Steps

- We will pause current stakeholding for now as we await more insight from partners about the potential for utilizing these policy vehicles this session to support community health workers.
- We will reengage this coalition soon with a status update as we get more definitive information and solicit your feedback and partnership if these opportunities advance.

Cont...Advancing CHW and PN in Colorado

- Consider approaches for community payment and CHWs/PdS
- Possibility for large grant funding opportunities to support in Colorado
- What is the support for CHW/PN/PdS funding from state level funding sources and fountains-still TBD

sus·tain·a·bil·i·ty
/səˌstānəˈbilədē/

MORE THAN JUST ABOUT MONEY



colorado school of
public health

UNIVERSITY OF COLORADO
COLORADO STATE UNIVERSITY
UNIVERSITY OF NORTHERN COLORADO

Thank You

Andrea (Andi) Dwyer

Andrea.dwyer@cuanschutz.edu