

A black and white photograph of a pair of worn-out sneakers and a backpack on a dark, textured ground. The sneakers are light-colored with dark laces and soles. The backpack is dark and has a strap visible. The background is a rough, dark surface.

Homelessness

Denver's Housing System

The Scope



552,830 people are experiencing homelessness nationwide.

There is a shortage of **3,900,000** units of housing nationally.

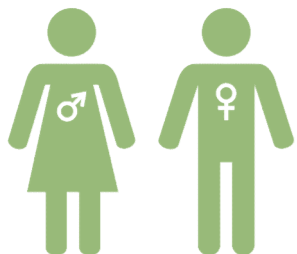
How do we know how many people are experiencing homelessness?

Point-In-Time

“ a snapshot and
an undercount of
homeless and at-risk ”



LENGTH OF
HOMELESSNESS



GENDER



AGE



FAMILY OR
INDIVIDUAL

Homelessness in Colorado

Colorado

10,857 individuals

4,329 unsheltered

1,073 are veterans

2,738 are chronically homeless

3,250 individuals in families

593 are unaccompanied youth

Seven-County Metro Denver

5,317 individuals

1,308 unsheltered

566 are veterans

1,596 are chronically homeless

1,407 individuals in families

237 are unaccompanied youth

Colorado Coalition for the Homeless



Services offered



- Housing for individuals and families
- Support services
 - Community resources/PATH
 - Street outreach
 - Housing First/ Social Impact Bond
 - Much more..
- Health care

Slide 7

CK1

Chelsea Kestler, 10/14/2019

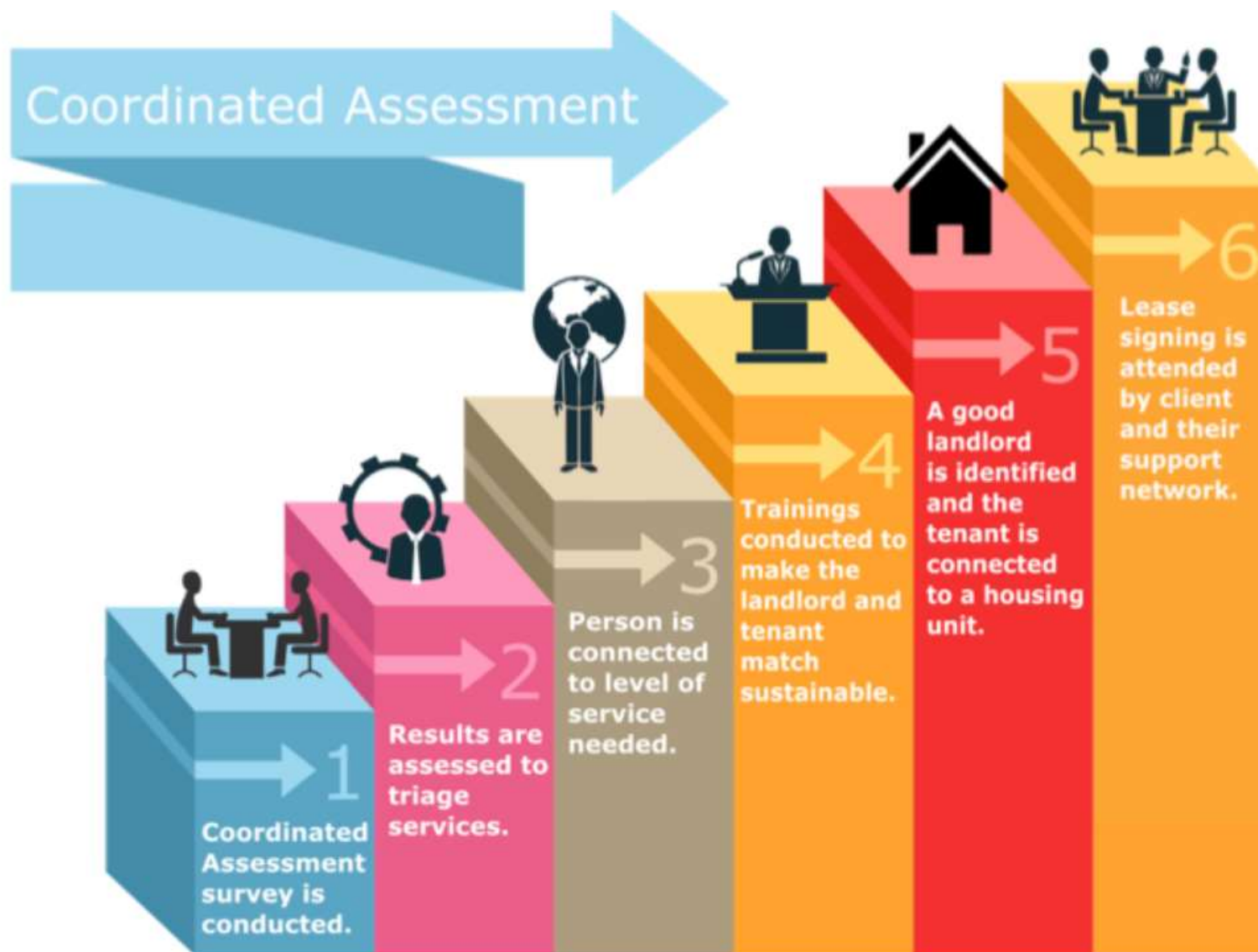


Housing First Model

Housing First is a programmatic approach designed to help chronically homeless families and individuals move more quickly off the streets or out of the shelter system.

Employs:

- crisis intervention
- rapid access to housing
- follow-up case management
- support services



Slide 9

CK2

https://www.mdhi.org/coordinated_entry

Chelsea Kestler, 10/14/2019

Permanent Supportive Housing

- “Permanent Supportive Housing is a combination of housing and services designed for people with serious mental illnesses or other disabilities who need support to live stably in their communities”

-US Interagency Council on Ending Homelessness

- Case management
- Substance Use Treatment
- Mental Health Support
- Employment Assistance
- Any other services needed by client



Rapid Rehousing (RRH)

- “RRH is a crisis intervention designed to quickly move individuals and families who are experiencing homelessness into permanent housing”

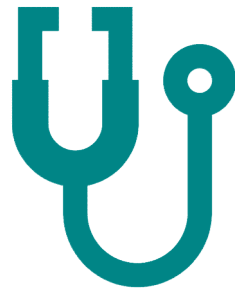


- Short – Medium length intervention (9 months- 2 years)
- Includes case management
- Clients pay a percentage on income, instead of percentage of rent
- Designed to get individuals and families back to self sufficiency in a short time and paying full market value rent

Social Impact Bond (SIB)

Denver's Social Impact Bond program will use funds from lenders to provide housing and supportive case management services to at least 250 homeless individuals.

This program is specifically designed for high utilizers emergency services, detox facilities, and the criminal justice system



Questions??