

Colorado's New Normal

State Maintains Historic Health Insurance Gains

FINDINGS FROM THE 2017 COLORADO HEALTH ACCESS SURVEY

COLORADO
HEALTH
ACCESS
SURVEY

2017

COLORADO
HEALTH
INSTITUTE



THE
COLORADO
TRUST

Access vs. Coverage

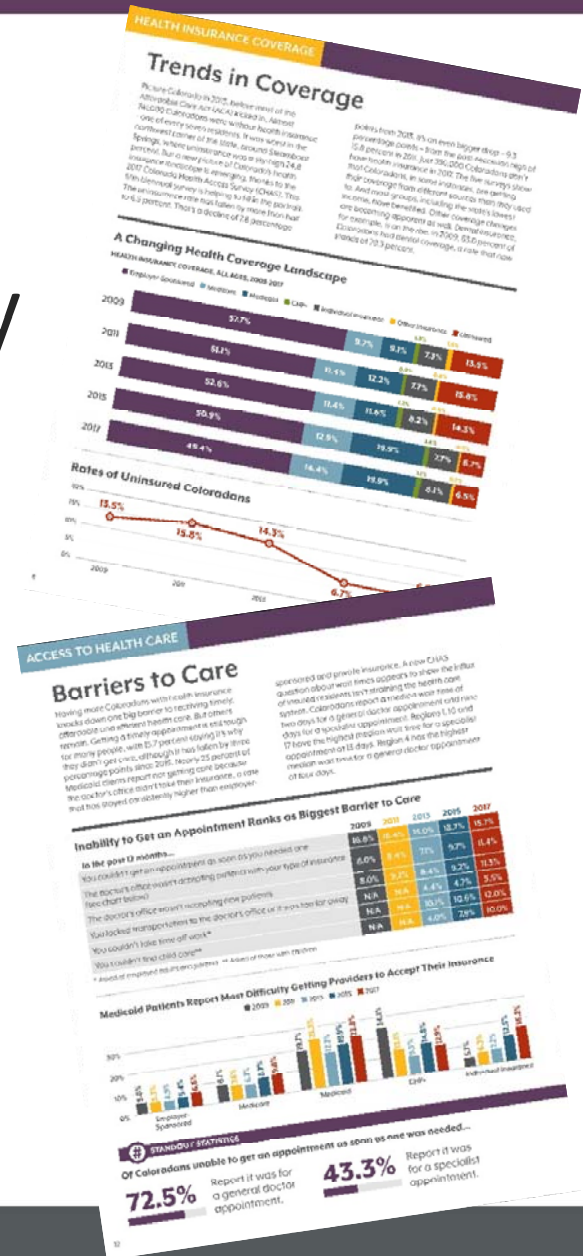
For most people living in the U.S., health insurance is the way they gain access to health care.

However...

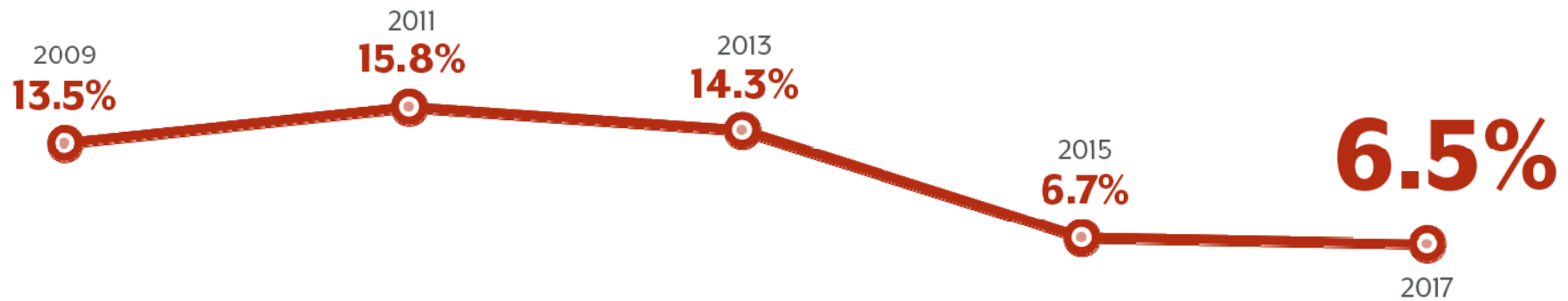
Not everybody who has coverage has access.
Not everybody who lacks coverage lacks access.

What is the CHAS?

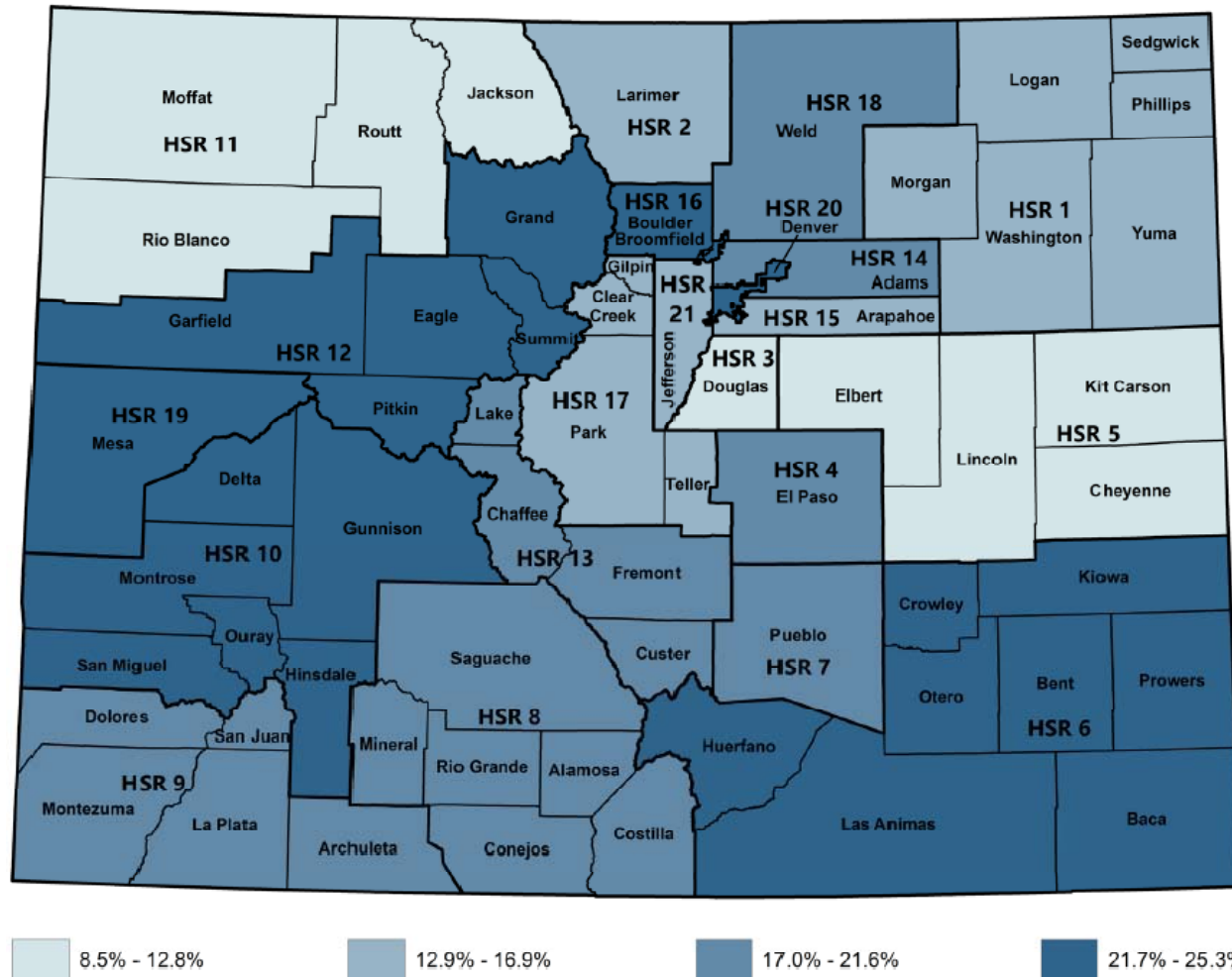
- Colorado Health Access Survey
- 10,000 Households
- Fielded February – May 2017
- Topics include:
 - Access
 - Affordability
 - Insurance
 - Health Status
 - Use of care
 - Behavioral Health



Colorado's Uninsured Rate Hit a Record Low in 2017



Coloradans Skip Care Because it Costs Too Much



Access To Transportation, Access To Health Care

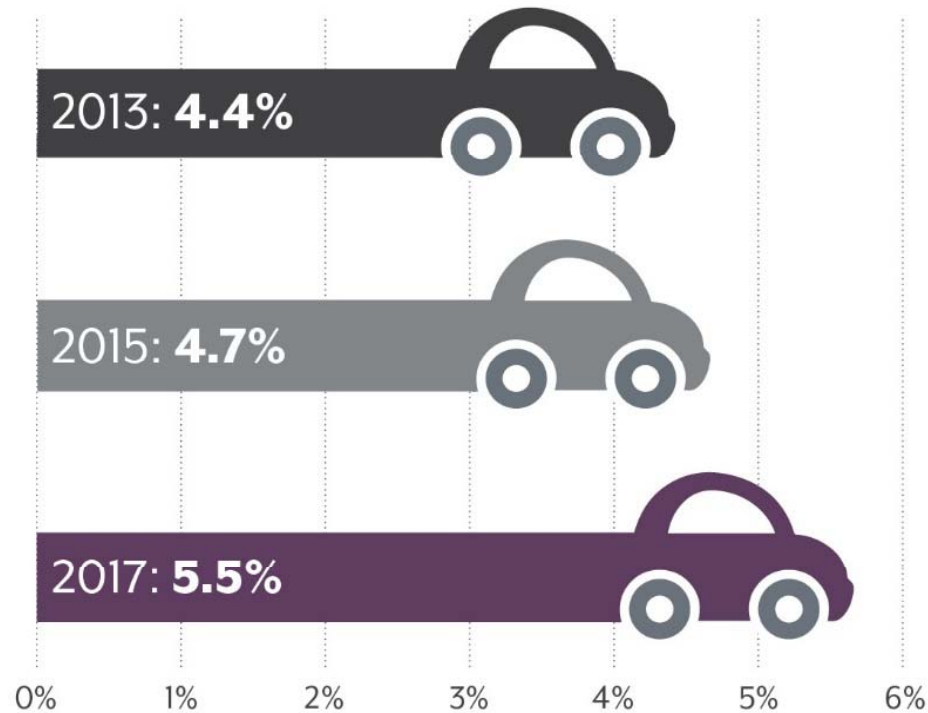
Slide 6

JZ3

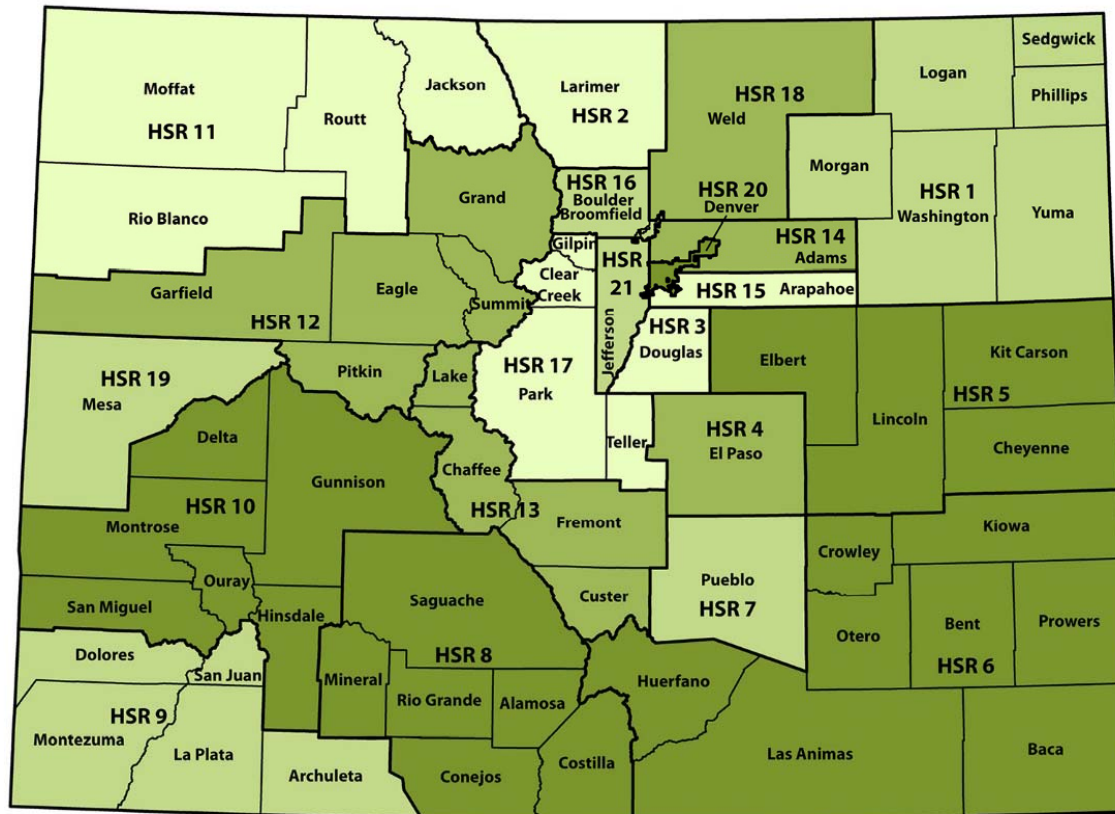
BRIAN: Maybe add white text saying "Access To Transportation, Access To Health Care"

Jaclyn Zubrzycki, 5/20/2019

Percentage of Coloradans Who Did Not Get Care Because They Were Unable to Find Transportation to the Doctor's Office or the Doctor's Office Was Too Far Away



Access to Transportation Isn't Just a Rural Issue



1.4% - 3.7%

3.8% - 5.8%

5.9% - 6.9%

7.0% - 9.0%

Who's Affected?

Percentage of Coloradans Reporting Transportation as a Barrier to Care . . .

...by Health Status and Income

Health Status	2017
Excellent / Very Good / Good Health	3.6%
Poor / Fair Health	18.2%
Income	2017
0-138% FPL	13.9%
139-400% FPL	5.0%
More than 400% FPL	2.0%

... by Insurance Type

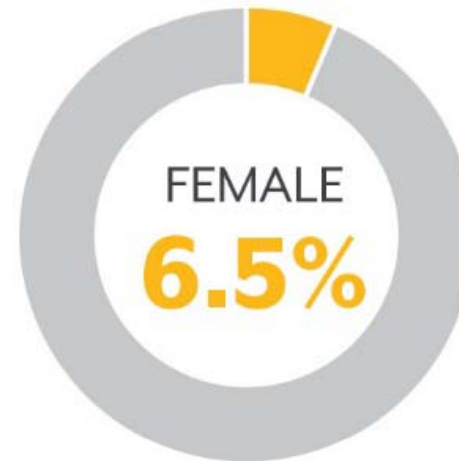
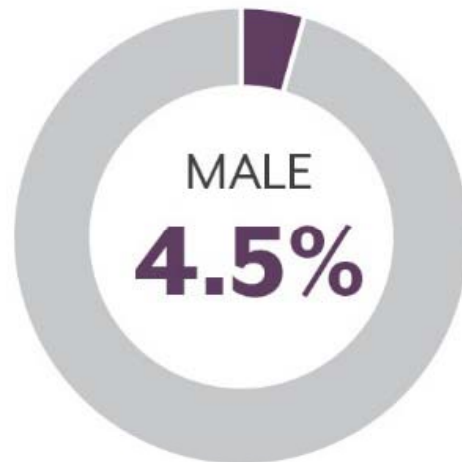
Insurance Type	2017
Employer-Sponsored	2.1%
Individual Insurance	2.3%
Medicare	6.2%
Medicaid	14.3%
Uninsured	6.1%

... by Race/Ethnicity

Race/Ethnicity	2017
Hispanic	9.3%
Non-Hispanic White	4.1%
Non-Hispanic Black	7.5%
Non-Hispanic Other Race	8.1%

Who's Affected?

Percentage of Coloradans Reporting Transportation as a Barrier to Care by Gender



Need more information?

Email chas@coloradohealthinstitute.org **Online** coloradohealthinstitute.org

Discussion Questions

1. What surprised you?
2. How could you use this data?
3. What change to you expect to see in the 2019 CHAS?

Using this Data

- Illustrating trends in your region
- Illustrating trends for a group you're working with
- Request additional data from CHI!
- People-Centered Transportation Coalition:
 - Used the information in the development of educational materials for legislators and providers
 - Advocacy re: NEMT in the Front Range
- 2019 data available soon

CHAS Data Can Help You ...

- Understand Colorado's changing health care landscape
- Identify opportunities for improving health
- Measure effectiveness of policy changes

- Public Use File
- Research File
- Regional workbooks
- Topic workbooks
- Survey Snapshots
- In-depth reports
- Customized presentations
- Data requests

Colorado's New Normal
State Maintains Historic Health Insurance Gains
FINDINGS FROM THE 2017 COLORADO HEALTH ACCESS SURVEY

HEALTH INSURANCE COVERAGE

The Uninsured: Where They Live

The ACA's success in expanding coverage in Colorado has been uneven, with rural areas seeing less progress than the state's more populated urban counties. That disparate pattern generally held in 2017 even as nearly every part of Colorado essentially maintained 2015's coverage gains. But Annapolis County (Region 9) was an outlier. Its uninsured rate fell by more than half to 3.2 percent in 2017 from 71 percent in 2015. The improvement may be due to an increase in the number of people who have insurance through their jobs. Annapolis County and other suburban Denver counties performed better than the state average, although Denver County's uninsured rate of 8.0 percent is higher than the state uninsured average rate of 6.5 percent.

The Farther from Denver, the Higher the Uninsured Rate

2017 Uninsured Rates by Region

Health Statistics Region	Percentage
1 Northeast	10.7%
2 Summit County	4.9%
3 Douglas County	1.4%
4 El Paso County	2.5%
5 Central Eastern Plains	5.0%
6 Southeast	8.6%
7 Pueblo County	4.7%
8 San Luis Valley	6.2%
9 Southwest	10.6%
10 Southern Valley	7.9%
11 Northwest	13.1%
12 170 Mountain Corridor	10.2%
13 Upper Arkansas Valley	7.9%
14 Adams County	5.9%
15 Annapolis County	3.2%
16 Boulder-Broomfield	7.4%
17 Mountain Gateway	7.4%
18 West County	3.8%
19 Mesa County	10.2%
20 Denver County	8.0%
21 Jefferson County	4.0%
Colorado	6.5%

Trends in Coverage

A Changing Health Coverage Landscape

Year	Employer-sponsored	Individual	Govt	Medicaid/Medicare	Other	Uninsured
2009	57.7%	9.7%	5.1%	13.1%	13.6%	1.8%
2011	51.1%	11.8%	12.2%	13.1%	10.8%	3.0%
2013	52.8%	11.4%	11.4%	13.2%	10.2%	1.9%
2015	50.9%	12.8%	10.9%	12.7%	10.7%	0.9%
2017	49.4%	14.4%	10.3%	11.7%	10.5%	0.7%

Rates of Uninsured Coloradans

Year	Rate (%)
2009	13.8%
2011	15.6%
2013	14.8%
2015	8.3%
2017	6.5%

The Highest Uninsured Rates in the State

Region	Rate (%)
Northeast (Region 1)	11.6%
Northeast (Region 1)	10.7%
Southwest (Region 9)	10.6%

Employment

Nearly One of 10 Privileged Coloradans Don't Have Health Insurance

9.3% of total Coloradans are uninsured, compared with 4.0 percent of executives.

Coming in September! CHAS 2019

New Items on the Survey:

- Surprise Billing
- Adequacy of Coverage
- Housing Stability
- Food Security
- Unfair Treatment in the Health Care System
- Opioid/Substance Use and Response
- Transgender Identity
- Advance Directives

Need More Information?

Online: coloradohealthinstitute.org

Jaclyn Zubrzycki: zubrzyckij@coloradohealthinstitute.org

